

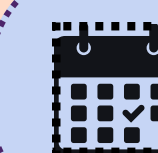
Organized by

NATIONAL INSTITUTE OF PHARMACEUTICAL EDUCATION AND RESEARCH, RAEBARELI



**Hurry Up !
Limited Seats
20 Only !**

**Department of Pharmacology & Toxicology
and
Department of Regulatory Toxicology**



HANDS ON TRAINING :

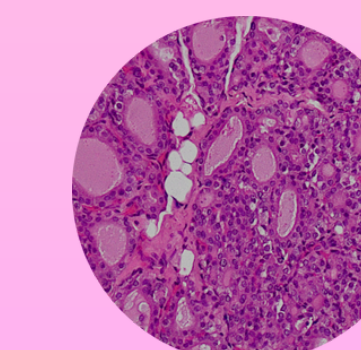
Registration :	
Workshop Date	17- 20 th September
Registration Last Date	15 th September
Registration Fees	Research Scholar : 3000 /-
	Post Doc. / Faculty : 4000 /-
Registration Link	https://forms.gle/2DerpKXJADTahQXx5
Payment Link	https://www.onlinesbi.sbi/sbicollect/icollecthome.htm?corpID=4357359
Enquiry :	✉ sapana.kushwaha@niperrbl.ac.in
	🌐 https://niperraebareli.edu.in

Chairperson

Prof. Shubhini A. Saraf
Director, NIPER-Raebareli

Organizer

Dr. Sapana Kushwaha
Assistant Professor
Department of Pharmacology & Toxicology



KEY HIGHLIGHTS

**Tissue Processing,
Embedding**

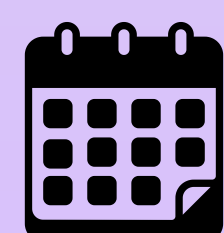
**Microtome and Cryostat
Sectioning**

**Advanced Staining
Techniques**

Immunohistochemistry

**Microscopy Techniques
and
Data Interpretation**

 **Note: Participants have to arrange their accommodation by themselves**



**Tuesday - Friday
17-20th September**



NIPER- Raebareli

Bijnor-Sisendi Road, Sarojini Nagar, Near CRPF Base Camp, Lucknow (UP)- 226002